

DEUTSCHES LEDERMUSEUM

Press Release from
Deutsches Ledermuseum in Offenbach/Main

TSATSAS

past present future

April 1 – October 30, 2022

Caption list



Tote bag FLUKE, calfskin leather, 2012
© Dimitrios Tsatsas, TSATSAS



Tote bag FLUKE, calfskin leather, 2012
© Dimitrios Tsatsas, TSATSAS



Tote bag FLUKE, calfskin leather, 2012
© Dimitrios Tsatsas, TSATSAS



Insight into the manufacture of the 931, 2018
© Dimitrios Tsatsas, TSATSAS



Top handle bag 931, design in cooperation
with Dieter Rams, calfskin leather, 2018
© Gerhardt Kellermann



Patterns and work samples, 2019
© Dimitrios Tsatsas, TSATSAS



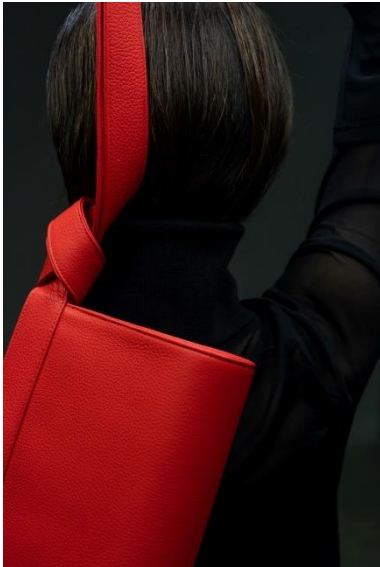
Insight into the manufacture of the 931, 2018
© Dimitrios Tsatsas, TSATSAS



Leather craft tools, 2015
© Dimitrios Tsatsas, TSATSAS



Clutch TAPE XS, calfskin leather, 2017
© Dimitrios Tsatsas, TSATSAS



Clutch TAPE XS, calfskin leather, 2017
© Dimitrios Tsatsas, TSATSAS



Shoulder bag OLIVE, calfskin leather, 2019
© Dimitrios Tsatsas, TSATSAS



Installation WHERE I END AND YOU BEGIN,
Berliner Mode Salon 2016 with phone case
FOIX, 2016, shoulder bag LINDEN, 2014, clutch
HAZE, 2014, calfskin leather
© Dimitrios Tsatsas, TSATSAS



Tote bag LUCID, calfskin leather, 2012
© Gerhardt Kellermann



Tote bag LUCID, calfskin leather, 2012
© Gerhardt Kellermann



Travel suitcase SUIT-CASE, Design in
Cooperation with Sir David Chipperfield,
calfskin leather, 2020
© Gerhardt Kellermann



Tote bag FLUKE, SO_FAR EDITION 01, Textiles
by Raf Simons for Kvadrat, 2017
© Gerhardt Kellermann



Esther and Dimitrios Tsatsas
© Gerhardt Kellermann

Deutsches Ledermuseum

Frankfurter Straße 86
63067 Offenbach/Main
phone +49 (0) 69 829798 0
info@ledermuseum.de

www.ledermuseum.de

Tuesday to Sunday 10:00 a.m. to 5:00 p.m.

Weekends and public Holidays 11:00 a.m. to 6:00 p.m.

On the second Thursday of the month 10:00 a.m. to 8:00 p.m.



From Frankfurt main station: LRT lines S1, S2, S8, S9
to station "Ledermuseum", exit Ludwigstrasse
(approx. 10-minute walk)

Press contact

NICKL PR
Simone Nickl
phone +49 (0) 89 4807103
sn@nickl-pr.de